

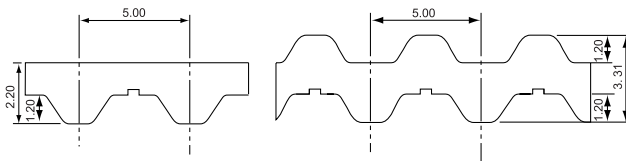
Classical Type (D)T5

● Product Code

(D)T5 - 20 - 100 U

Tooth Profile (DT5 for Double timing belt) Width=20mm Number of teeth=100 U Type (polyurethane)

U Type (Polyurethane) only



Belt width lineup Table 1-21

Nominal width	Width (mm)
05	5.0
10	10.0
15	15.0
20	20.0

Belt weight per unit (kg/10mm x 1m) Table 1-22

Material	Tooth Profile	Belt weight
polyurethane	T5	0.020
	DT5	0.023

Standard belt size table

Table 1-23

Number of teeth	Pitch length(mm)	Manufacturable Size (U Type)	Number of teeth	Pitch length(mm)	Manufacturable Size (U Type)
33	165	S	103	515	D
37	185	S	105	525	S
40	200	S	109	545	S
43	215	S	110	550	S · D
44	220	S	112	560	S
45	225	S	115	575	S
49	245	S	118	590	S · D
50	250	S	120	600	S · D
51	255	S	122	610	S
52	260	S	124	620	S · D
54	270	S	125	625	S
55	275	S	126	630	S
56	280	S	130	650	S · D
59	295	S	132	660	S
60	300	S · D	135	675	S
61	305	S	138	690	S
65	325	S	140	700	S · D
66	330	S	144	720	S
68	340	S	145	725	S
70	350	S · D	150	750	S · D
71	355	S	156	780	S
72	360	S	160	800	S · D
73	365	S	163	815	S · D
75	375	S	168	840	S
78	390	S	170	850	S · D
80	400	S · D	172	860	S · D
82	410	S · D	180	900	S · D
84	420	S	188	940	S · D
85	425	S	195	975	S
88	440	S	198	990	S
89	445	S	200	1000	S
90	450	S · D	215	1075	S
91	455	S	220	1100	S · D
92	460	S · D	228	1140	S · D
95	475	S	243	1215	S
96	480	S · D	276	1380	S
100	500	S · D	288	1440	S
102	510	S			

● S=Single-sided D=Double timing belt

● Some sizes may not be in stock. Please contact us for the stock status before placing an order.

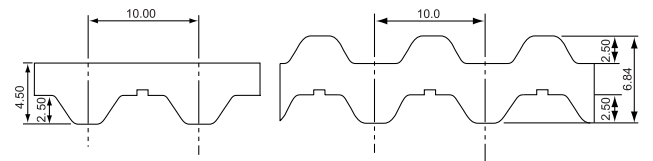
Classical Type (D)T10

● Product Code

(D)T10 - 20 - 100 U

Tooth Profile (DT10 for Double timing belt) Width=20mm Number of teeth=100 U Type (polyurethane)

U Type (Polyurethane) only



Belt width lineup Table 1-24

Nominal width	Width (mm)
15	15.0
20	20.0
25	25.0
30	30.0
40	40.0
50	50.0

Belt weight per unit (kg/10mm x 1m) Table 1-25

Material	Tooth Profile	Belt weight
polyurethane	T10	0.042
	DT10	0.050

Standard belt size table

Table 1-26

Number of teeth	Pitch length(mm)	Manufacturable Size (U Type)	Number of teeth	Pitch length(mm)	Manufacturable Size (U Type)
26	260	S	105	1050	S
36	360	D	108	1080	S
37	370	S	110	1100	S · D
40	400	S	111	1110	S
41	410	S	114	1140	S
44	440	S	115	1150	S
45	450	S	120	1200	S · D
50	500	S	121	1210	S · D
53	530	S · D	124	1240	S · D
55	550	S	125	1250	S · D
56	560	S	130	1300	S · D
60	600	S · D	132	1320	S · D
61	610	S	135	1350	S · D
63	630	S · D	138	1380	S
65	650	S	139	1390	S
66	660	S · D	140	1400	S · D
69	690	S	142	1420	S · D
70	700	S · D	144	1440	S
72	720	S · D	145	1450	S
75	750	S · D	146	1460	S
78	780	S	150	1500	S · D
80	800	S · D	156	1560	S
81	810	S	160	1600	S · D
84	840	S · D	161	1610	S · D
85	850	S	170	1700	S · D
88	880	S	175	1750	S
89	890	S	178	1780	S
90	900	S · D	180	1800	S · D
91	910	S	188	1880	S · D
92	920	S	196	1960	S
94	940	S	216	2160	S
95	950	S	220	2200	S
96	960	S	221	2210	S
97	970	S	225	2250	S
98	980	S · D			
100	1000	S · D			
101	1010	S			

● S=Single-sided D=Double timing belt

● Some sizes may not be in stock. Please contact us for the stock status before placing an order.

1
Properties

