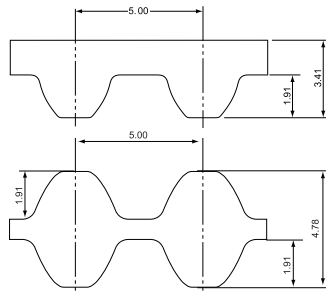


# SUPER TORQUE (D)S5M

GB Type (Rubber) only



● Product Code

**250**

**(D)S5M**

**1125**

**GB**

Nominal width (mm) × 10

Tooth Profile (DS5M for Double timing belt)

Nominal length(mm)

GB Type (rubber)

Belt width lineup Table 1-39 Belt weight per unit (kg/10mm x 1m) Table 1-40

Nominal width	Width (mm)	Material	Tooth Profile	Belt weight
100	10	rubber	S5M	0.034
150	15		DS5M	0.034
250	25			

## Standard belt size table

Nominal length	Number of teeth	Pitch length(mm)	Manufacturable Size (S: GB Type D: G Type)
S5M 225	45	225	S
S5M 255	51	255	S
S5M 260	52	260	S
S5M 295	59	295	S
S5M 300	60	300	S
S5M 305	61	305	S
S5M 320	64	320	S
S5M 325	65	325	S
S5M 340	68	340	S
S5M 350	70	350	S
S5M 375	75	375	S
S5M 380	76	380	S
S5M 390	78	390	S
S5M 395	79	395	S
S5M 400	80	400	S · D
S5M 410	82	410	S · D
S5M 425	85	425	S · D
S5M 435	87	435	S · D
S5M 440	88	440	S · D
S5M 450	90	450	S · D
S5M 460	92	460	S · D
S5M 470	94	470	S · D
S5M 475	95	475	S · D
S5M 490	98	490	S · D
S5M 500	100	500	S · D
S5M 520	104	520	S · D
S5M 530	106	530	S · D
S5M 545	109	545	S · D
S5M 550	110	550	S · D
S5M 560	112	560	S · D
S5M 575	115	575	S · D
S5M 590	118	590	S · D
S5M 595	119	595	S · D
S5M 600	120	600	S · D
S5M 615	123	615	S · D
S5M 625	125	625	S · D
S5M 640	128	640	S · D
S5M 650	130	650	S · D
S5M 665	133	665	S · D
S5M 670	134	670	S · D
S5M 675	135	675	S · D
S5M 690	138	690	S · D
S5M 695	139	695	S · D
S5M 700	140	700	S · D
S5M 710	142	710	S · D
S5M 720	144	720	S · D
S5M 725	145	725	S · D
S5M 730	146	730	S · D
S5M 740	148	740	S · D
S5M 750	150	750	S · D
S5M 765	153	765	S · D
S5M 780	156	780	S · D
S5M 800	160	800	S · D
S5M 810	162	810	S · D
S5M 830	166	830	S · D

## Standard belt size table

Table 1-41

Nominal length	Number of teeth	Pitch length(mm)	Manufacturable Size (S: GB Type D: G Type)
S5M 845	169	845	S · D
S5M 850	170	850	S · D
S5M 870	174	870	S · D
S5M 890	178	890	S · D
S5M 900	180	900	S · D
S5M 930	186	930	S · D
S5M 950	190	950	S · D
S5M 965	193	965	S · D
S5M 975	195	975	S · D
S5M 980	196	980	S · D
S5M 1000	200	1000	S · D
S5M 1025	205	1025	S · D
S5M 1050	210	1050	S · D
S5M 1055	211	1055	S · D
S5M 1085	217	1085	S · D
S5M 1090	218	1090	S · D
S5M 1100	220	1100	S · D
S5M 1105	221	1105	S · D
S5M 1115	223	1115	S · D
S5M 1120	224	1120	S · D
S5M 1125	225	1125	S · D
S5M 1135	227	1135	S · D
S5M 1145	229	1145	S · D
S5M 1160	232	1160	S · D
S5M 1165	233	1165	S · D
S5M 1195	239	1195	S · D
S5M 1200	240	1200	S · D
S5M 1225	245	1225	S · D
S5M 1250	250	1250	S · D
S5M 1270	254	1270	S · D
S5M 1290	258	1290	S · D
S5M 1295	259	1295	S · D
S5M 1350	270	1350	S · D
S5M 1420	284	1420	S · D
S5M 1475	295	1475	S · D
S5M 1500	300	1500	S · D
S5M 1505	301	1505	S · D
S5M 1530	306	1530	S · D
S5M 1595	319	1595	S · D
S5M 1605	321	1605	S · D
S5M 1615	323	1615	S · D
S5M 1680	336	1680	S · D
S5M 1690	338	1690	S · D
S5M 1715	343	1715	S · D
S5M 1800	360	1800	S · D
S5M 1945	389	1945	S · D
S5M 2000	400	2000	S · D
S5M 2145	429	2145	S · D
S5M 2255	451	2255	S · D
S5M 2480	496	2480	S · D
S5M 2525	505	2525	S · D
S5M 2980	596	2980	S · D
S5M 3090	618	3090	S · D

● S=Single-sided D=Double timing belt

● The design procedure and the defined drive capacity of single-sided timing belts are applied to the equivalent double-sided timing belts.

● Some sizes may not be in stock. Please contact us for the stock status before placing an order.

1 Properties

