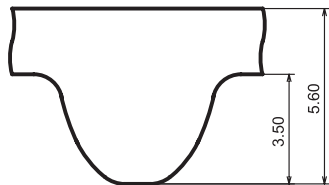
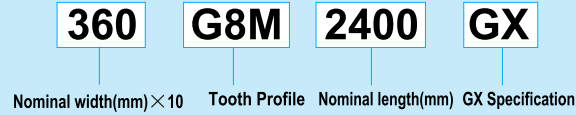


Giga Torque GX G8M

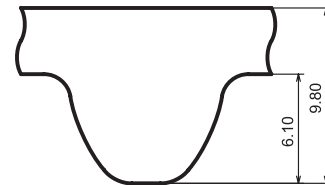
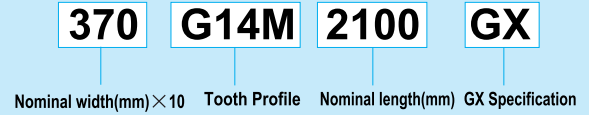
Giga Torque GX G14M

● Belt Code



Belt tooth pitch 8mm

● Belt Code



Belt tooth pitch 14mm

Belt width lineup Table 1-72 **Belt weight per unit (kg/10mm x 1m)** Table 1-73

| Nominal width | Belt width (mm) | Material | Tooth Profile | Belt weight |
|---------------|-----------------|----------|---------------|-------------|
| 120 | 12 | rubber | G8M | 0.049 |
| 210 | 21 | | | |
| 360 | 36 | | | |
| 620 | 62 | | | |

Belt width lineup Table 1-75 **Belt weight per unit (kg/10mm x 1m)** Table 1-76

| Nominal width | Belt width (mm) | Material | Tooth Profile | Belt weight |
|---------------|-----------------|----------|---------------|-------------|
| 200 | 20 | rubber | G14M | 0.083 |
| 370 | 37 | | | |
| 680 | 68 | | | |
| 900 | 90 | | | |
| 1250 | 125 | | | |

Standard belt size table

Table 1-74

| Nominal length | Number of teeth | Pitch length(mm) | Manufacturable Size |
|----------------|-----------------|------------------|---------------------|
| G8M 640 | 80 | 640 | S |
| G8M 720 | 90 | 720 | S |
| G8M 800 | 100 | 800 | S |
| G8M 880 | 110 | 800 | S |
| G8M 896 | 112 | 896 | S |
| G8M 960 | 120 | 960 | S |
| G8M 1000 | 125 | 1000 | S |
| G8M 1040 | 130 | 1040 | S |
| G8M 1120 | 140 | 1120 | S |
| G8M 1200 | 150 | 1200 | S |
| G8M 1224 | 153 | 1224 | S |
| G8M 1280 | 160 | 1280 | S |
| G8M 1440 | 180 | 1440 | S |
| G8M 1600 | 200 | 1600 | S |
| G8M 1760 | 220 | 1760 | S |
| G8M 1792 | 224 | 1792 | S |
| G8M 1800 | 225 | 1800 | S |
| G8M 2000 | 250 | 2000 | S |
| G8M 2200 | 275 | 2200 | S |
| G8M 2240 | 280 | 2240 | S |
| G8M 2400 | 300 | 2400 | S |
| G8M 2520 | 315 | 2520 | S |
| G8M 2600 | 325 | 2600 | S |
| G8M 2800 | 350 | 2800 | S |
| G8M 2840 | 355 | 2840 | S |
| G8M 3048 | 381 | 3048 | S |
| G8M 3200 | 400 | 3200 | S |
| G8M 3280 | 410 | 3280 | S |
| G8M 3600 | 450 | 3600 | S |
| G8M 4000 | 500 | 4000 | S |
| G8M 4400 | 550 | 4400 | S |
| G8M 4480 | 560 | 4480 | S |

Standard belt size table

Table 1-77

| Nominal length | Number of teeth | Pitch length(mm) | Manufacturable Size |
|----------------|-----------------|------------------|---------------------|
| G14M 994 | 71 | 994 | S |
| G14M 1120 | 80 | 1120 | S |
| G14M 1190 | 85 | 1190 | S |
| G14M 1260 | 90 | 1260 | S |
| G14M 1400 | 100 | 1400 | S |
| G14M 1568 | 112 | 1568 | S |
| G14M 1610 | 115 | 1610 | S |
| G14M 1750 | 125 | 1750 | S |
| G14M 1890 | 135 | 1890 | S |
| G14M 1960 | 140 | 1960 | S |
| G14M 2100 | 150 | 2100 | S |
| G14M 2240 | 160 | 2240 | S |
| G14M 2310 | 165 | 2310 | S |
| G14M 2380 | 170 | 2380 | S |
| G14M 2450 | 175 | 2450 | S |
| G14M 2520 | 180 | 2520 | S |
| G14M 2590 | 185 | 2590 | S |
| G14M 2660 | 190 | 2660 | S |
| G14M 2800 | 200 | 2800 | S |
| G14M 3136 | 224 | 3136 | S |
| G14M 3304 | 236 | 3304 | S |
| G14M 3360 | 240 | 3360 | S |
| G14M 3500 | 250 | 3500 | S |
| G14M 3850 | 275 | 3850 | S |
| G14M 3920 | 280 | 3920 | S |
| G14M 4326 | 309 | 4326 | S |
| G14M 4410 | 315 | 4410 | S |

● S=Single-sided

● Some sizes may not be in stock. Please contact us for the stock status before placing an order.

